
GPRS 安装指南

1.介绍

DialUpSetup（拨号安装）程序是一种方便用户安装便携式调制解调器的工具。这种工具可以使用户无需按照默认的复杂的视窗调制解调器的安装步骤来进行。

2.支持的操作系统

目前 DialUpSetup 支持 Windows 2000 和 Windows XP，该工具不支持 Windows 98。

3.先决条件

便携式 USB 驱动需要预先安装。

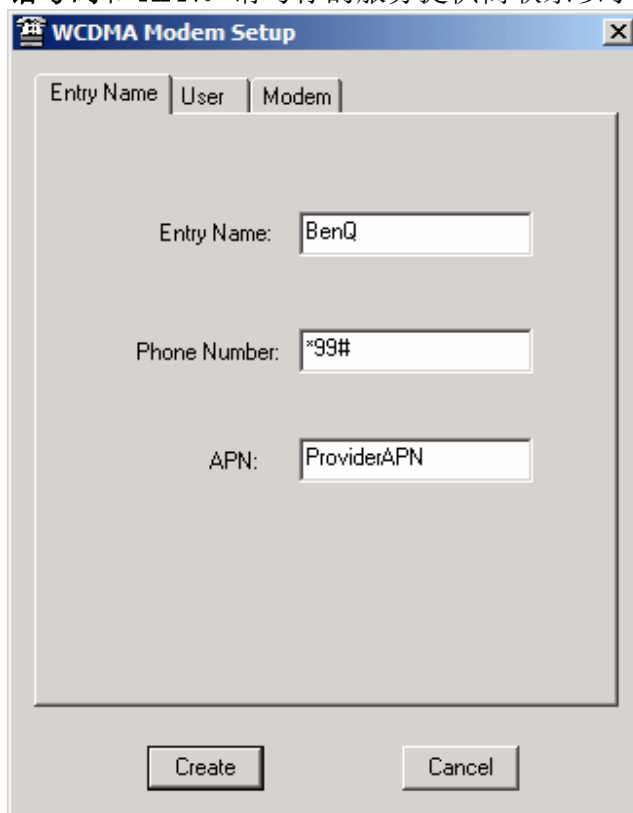
4.安装过程

4.1 运行 DialupSetup.exe



GPRS 安装指南

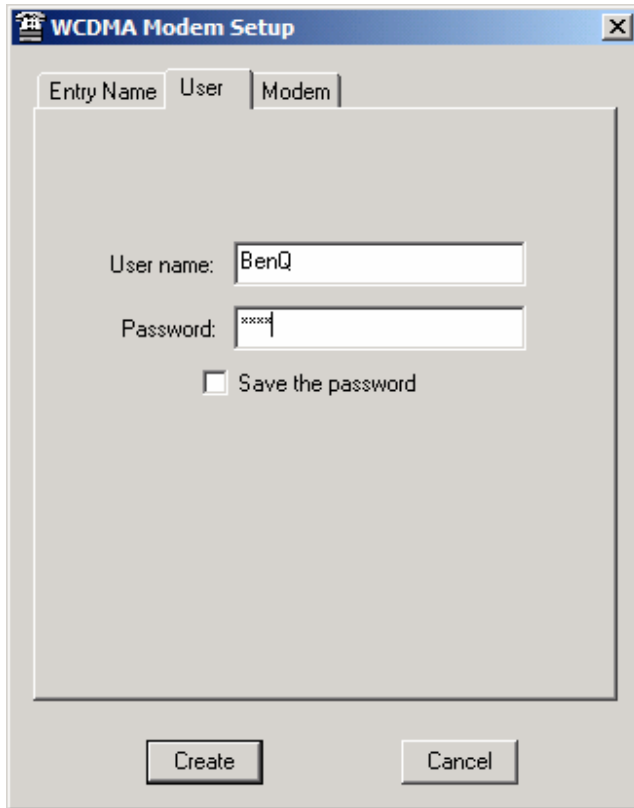
4.2 在“网络和拨号连接设置”中输入您喜欢的**登陆名**。输入由服务提供商提供的**电话号码**和 **APN**。请与你的服务提供商联系以了解详情。



The image shows a Windows-style dialog box titled "WCDMA Modem Setup". It has three tabs: "Entry Name", "User", and "Modem". The "Entry Name" tab is selected. Inside the dialog, there are three text input fields. The first is labeled "Entry Name:" and contains the text "BenQ". The second is labeled "Phone Number:" and contains the text "*99#". The third is labeled "APN:" and contains the text "ProviderAPN". At the bottom of the dialog, there are two buttons: "Create" and "Cancel".

Field	Value
Entry Name	BenQ
Phone Number	*99#
APN	ProviderAPN

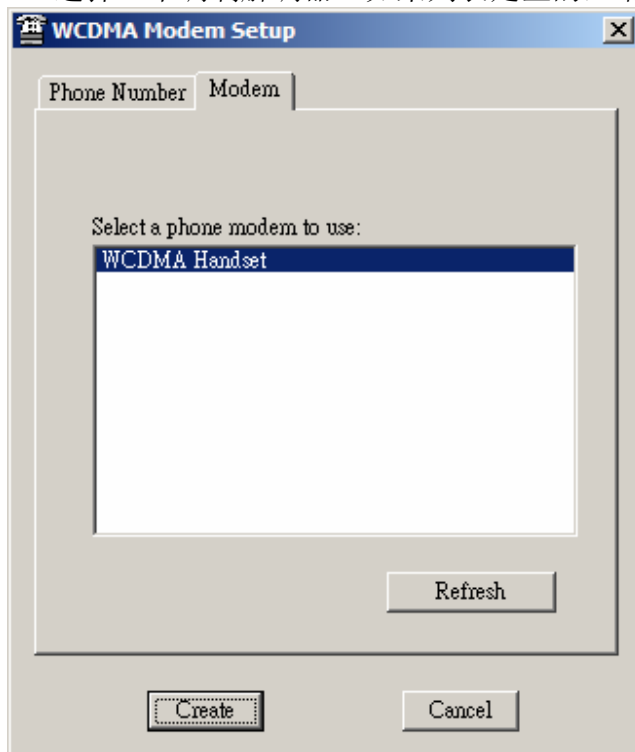
4.3 输入由网络提供商提供的**用户名**和**密码**。请与你的服务提供商联系以了解详情。



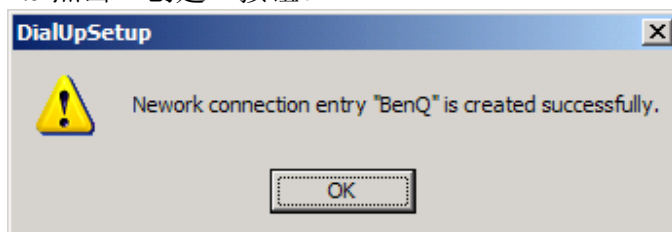
The image shows a Windows-style dialog box titled "WCDMA Modem Setup". It has three tabs: "Entry Name", "User", and "Modem". The "User" tab is currently selected. Inside the dialog, there are two text input fields. The first is labeled "User name:" and contains the text "BenQ". The second is labeled "Password:" and contains five "x" characters. Below these fields is a checkbox labeled "Save the password", which is currently unchecked. At the bottom of the dialog, there are two buttons: "Create" and "Cancel".

GPRS 安装指南

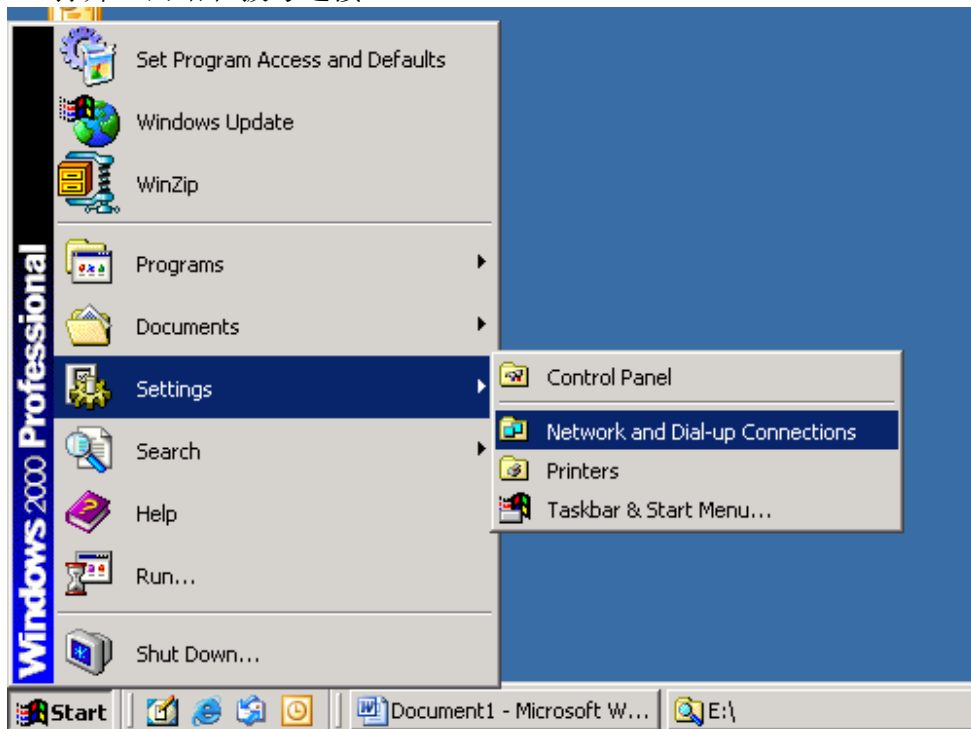
4.4 选择一个调制解调器。如果列表是空的，请点击“刷新”按钮更新列表。



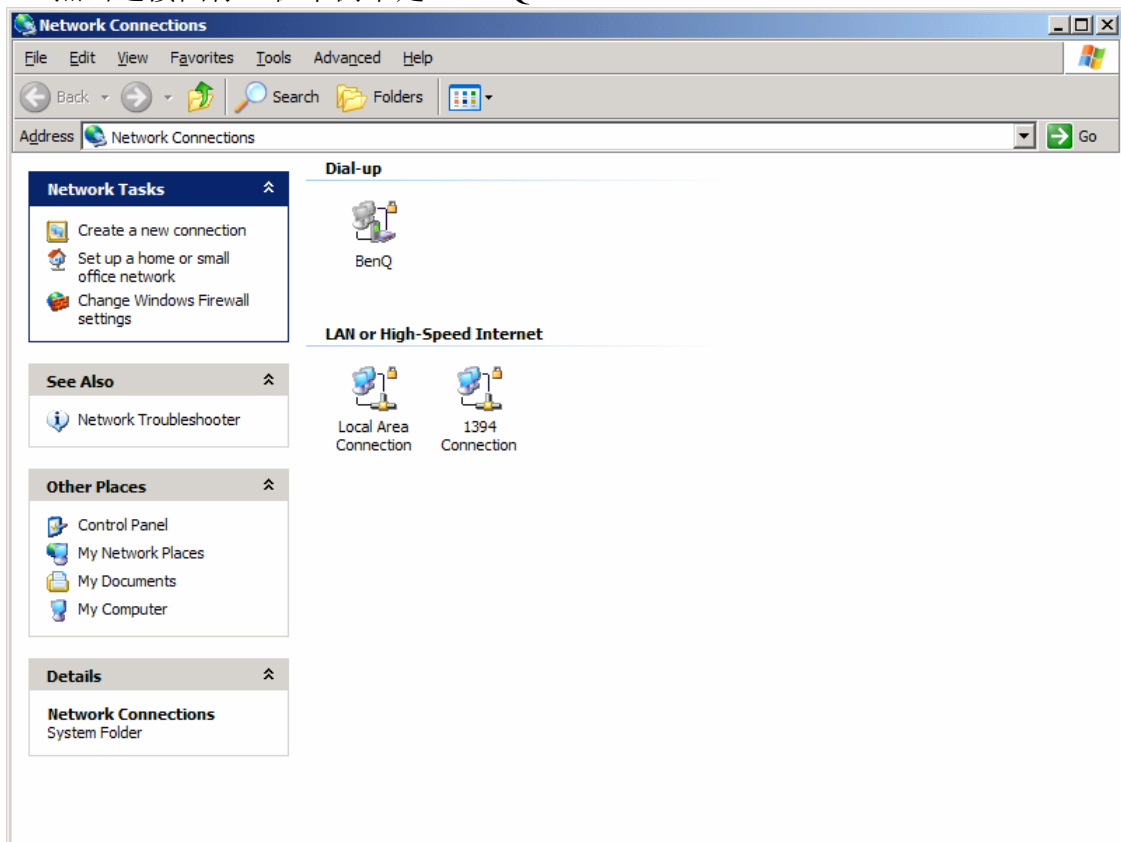
4.5 点击“创建”按钮。



4.6 打开“网络和拨号连接”。

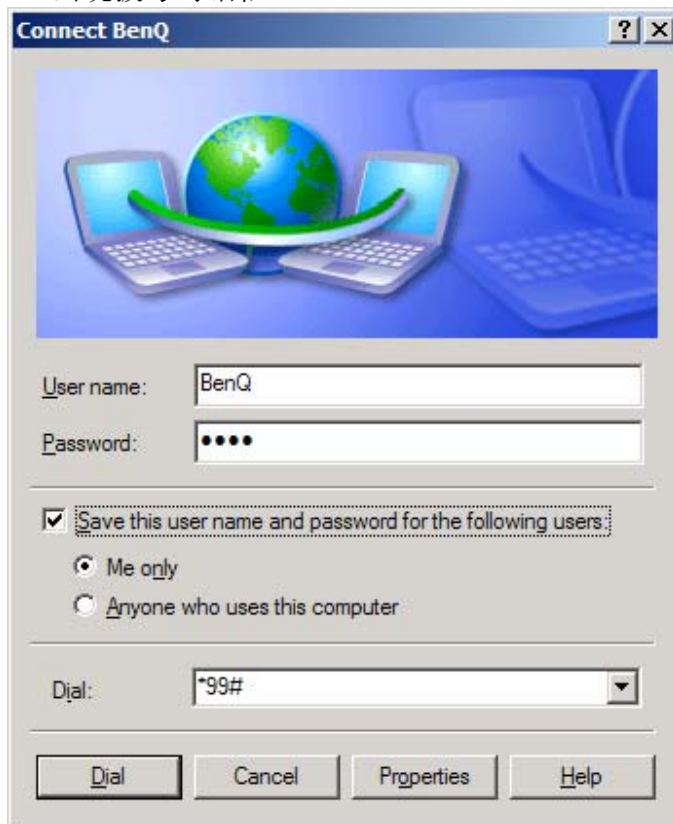


4.7 点击连接图标（在本例中是“BenQ”）。



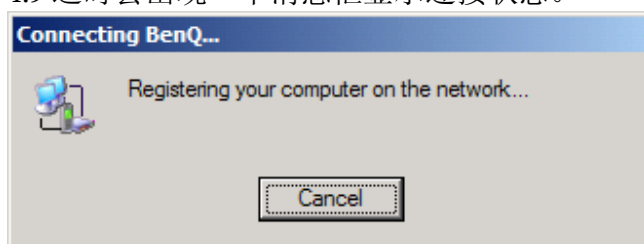
GPRS 安装指南

4.8 出现拨号对话框。



点击“拨号”

4.9 这时会出现一个消息框显示连接状态。



GPRS 安装指南

4.10 现在 GPRS 连接创建已经完成。

一个小的网络图标出现在系统托盘上以表明网络连接的状态。

